

次の英文の内容に関して、(31)から(35)までの質問に対する答えとして最も適切なもの、または文を完成させるのに最も適切なものを1, 2, 3, 4の中から一つ選びなさい。

Animals at the Zoo

Yoko is a junior high school student. Yesterday, she went to a zoo on a school trip.

When the students arrived at the zoo, a zoo worker was waiting for them. She said, "Welcome! In this zoo, there are many special animals." Yoko looked at the zoo map. There were African elephants, polar bears*, and red pandas*. Then the worker said, "But we have a problem. These animals will die out* if we don't help them."

The students walked around the zoo with their teacher. Yoko wrote about the animals in her notebook. Her favorite animal was the red panda. They were always moving in their house. Some pandas could stand up! But Yoko became sad when she thought about the zoo worker's story. The animals are dying out. She wanted to help them.

At home, Yoko told her parents about the African elephants, polar bears and red pandas. They talked about ways to help them. She wants to go to the zoo again next month.

*polar bear: シロクマ *red panda: レッサーパンダ *die out: 絶滅する

- (31) Who is Yoko?
 1 A junior high school student. 2 A zoo worker in Africa.
 3 A high school teacher. 4 A bus driver in Chiba.
- (32) What did Yoko do at the zoo?
 1 She helped the zoo workers.
 2 She wrote about the animals in her notebook.
 3 She took care of sick animals. 4 She watched a video about the zoo.
- (33) What was Yoko's favorite animal?
 1 The African elephant. 2 The polar bear.
 3 The red panda. 4 The mountain lion.
- (34) Why did Yoko become sad?
 1 The red pandas didn't move. 2 The zoo worker had to go home.
 3 She couldn't see the elephants. 4 The animals are dying out.
- (35) Yoko wants to
 1 visit Africa with her parents. 2 go to the zoo again.
 3 tell her friends about the trip. 4 read books about polar bears.

Listening Test

4級リスニングテストについて

- ① このテストは、第1部から第3部まであります。

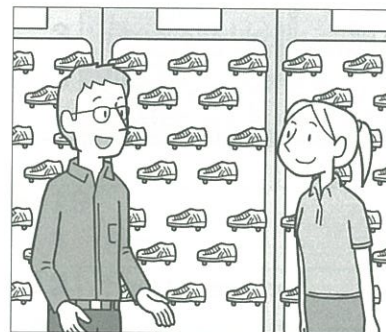
英文は二度放送されます。

| | |
|-----|--|
| 第1部 | イラストを参考にしながら対話と応答を聞き、最も適切な応答を1, 2, 3の中から一つ選びなさい。 |
| 第2部 | 対話と質問を聞き、その答えとして最も適切なものを1, 2, 3, 4の中から一つ選びなさい。 |
| 第3部 | 英文と質問を聞き、その答えとして最も適切なものを1, 2, 3, 4の中から一つ選びなさい。 |

- ② No. 30のあと、10秒すると試験終了の合図がありますので、筆記用具を置いてください。

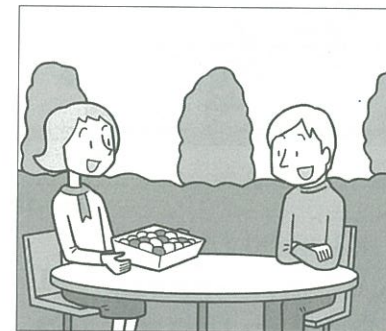
第1部

No. 1



- 1
2
3

No. 2



- 1
2
3

